



C SERIES[®]

19" heavy duty server rack
for data centers



19" rack for data centers
and network applications



Cabling
Multi Application



1

C SERIES® MAX LOAD - 1200 KGS

Features

1 Flexible ventilation components
The cover provided two 355mm (W) x 55mm (L) cable access and cover, Guaranteed orderly and space-saving cable management. Adjustable at installation site, cable management can be selected from extensive range of accessory components.

4 C SERIES Server rack (Single hexagon perforated door)
Includes 1 Open frame, 2 perforated steel door, 2 side panel, 2 pair 19" panel mount angle, 3 pair horizontal mount support, 4 castor, 4 leveling feet and fan tray .

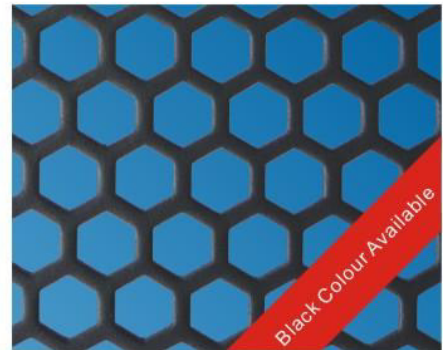


2

2 C SERIES Server rack (Open Frame)
C SERIES has been designed for quick and easy modification to suit specific applications or corporate identity requirements, the classic C Series for static loads of 1200kgs. Flexible and many features as you need for your application .

5 Flexible ventilation components
The correct ventilation solution is always provided by the corresponding selection of accessory components. Still applicable form C SERIES: 80% perforation, which guarantees unobstructed airflow of the installed components.

3 C SERIES Server rack (Standard Rack)
Includes 1 Open frame, 1 glass door, 1 vented steel door, 2 side panel, 2 pair 19" panel mount angle, 3 pair horizontal mount support, 4 castor, 4 leveling feet and fan tray .



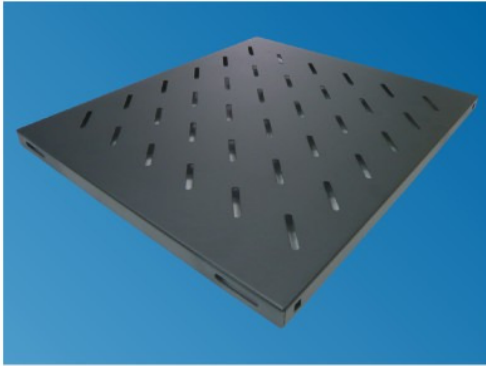
3



4



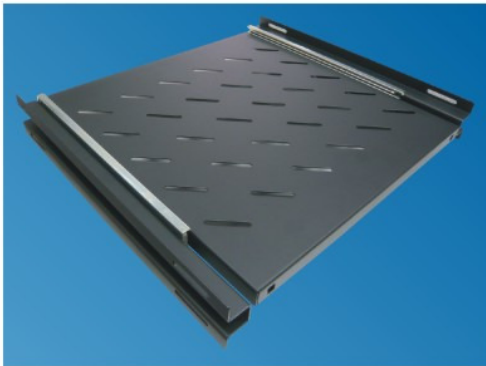
5



FIXED SHELF - C SERIES

Shelf assembly to 19" panel mounting angles allow mixed installation with 19" distribution panels.
Material: 1.5mm Steel

Order Code	Mounting	Depth	Used on	Loading (kg)
TT 37	19"	370 mm	625 mm deep rack	50
TT 45	19"	450 mm	825 mm deep rack	50
TT 60	19"	600 mm	825 mm or above deep rack	50
TT 70	19"	700 mm	985 mm or above deep rack	50
TTD 60	19"	600 mm	825 mm or above deep rack	100
TTD 70	19"	700 mm	985 mm or above deep rack	100



SLIDING SHELF - C SERIES

Shelf assembly to 19" panel mounting angles allow mixed installation with 19" distribution panels.
Material: 1.5mm Steel

Order Code	Mounting	Depth	Used on	Loading (kg)
STT 37	19"	370 mm	625 mm deep rack	35
STT 45	19"	450 mm	825 mm deep rack	35
STT 60	19"	600 mm	825 mm or above deep rack	35

Power Distribution Unit (U.K)

Applications

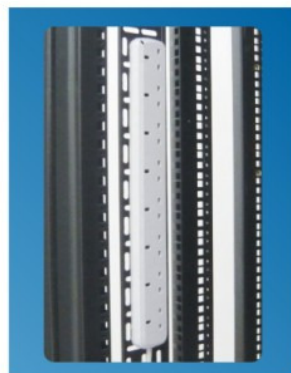
- Data Center
- Computer workstations
- Lan racking
- Security systems
- UPS power distribution
- Industrial enviroment

Specification

Main Plug: BS1363, IEC320 or IEC60309
 Operating Voltage: 250V AC 50/60Hz
 Rate load current: 13A, 16A, 20A, 27A or 32A
 Max. Power Pmax: 3250W - 8000W
 Operating temperature range: -20° ~ + 70°
 Power indicator : Red or Green LED



L6 - Plastic Case
Vertical Mounting



L8 - Plastic Case
Vertical Mounting

PDU's - 1.5U Aluminum Case

PP Series
1U Aluminum Case

PU Series
UK13A Strip

PM Series
Amp Monitor

PE Series
IEC 320 C13 Strip



Standard Rack - Front Glass Door

C SERIES® 19" Networking Platform Enclosure

Feature:

- Flexible and many features as you need for your application
- Basic version, with front glass door and vented rear steel door
- 1200kg Static load
- Fan unit options - 2 - 6 cooling fan
- 6 standard height options: 45U, 42U, 37U, 27U, 22U and 17U
- 5 depth options: 1185mm, 1085mm, 985mm , 825mm and 625mm
- Components in acc. With IEC 60297
- Design door at the front with coloured offset perforation
- Cable entry on the top cover and bottom, can be completely removal and replacement after cabling



Standard Rack - Rear Vented Steel Door

Basic Package Configurations

- Basic frame, top & base w/ cable entry (1200kg Loading)
- Front 5mm toughened safety glass door w/ A3 turning lock
- Rear vented steel door w/ A3 turning lock
- Lockable quick release side panel w/ clip lock x 2
- Full height adjustable 19" panel mounting angle w/ U marking x 4
- Full height adjustable Aux. side mount panel x 2
- Full depth horizontal mounting support x 6
- Full height adjustable vertical cable tray x 2 (75mm wide)
- Top mount fan tray w / 2 x AC 220V cooling fan
- Heavy duty castor & leveling feet x 4
- Earthing kit set
- M6 cage nuts, cup washers & fixings x 50

Ordering Information

Order Code	Effective Height (U)	Overall Height	Overall Width	Overall Depth	Effective Depth
C 6042	42U	2055mm / 81"	600mm / 24"	1085 mm / 42"	1060 mm / 41"
C 6942			600mm / 24"	985 mm / 38"	960 mm / 37"
C 6842			600mm / 24"	825 mm / 32"	800 mm / 31"
C 6642			600mm / 24"	625 mm / 24"	600 mm / 23"
C 6037	37U	1835mm / 72"	600mm / 24"	1085 mm / 42"	1060 mm / 41"
C 6937			600mm / 24"	985 mm / 38"	960 mm / 37"
C 6837			600mm / 24"	825 mm / 32"	800 mm / 31"
C 6637			600mm / 24"	625 mm / 24"	600 mm / 23"
C 6027	27U	1390mm / 55"	600mm / 24"	1085 mm / 42"	1060 mm / 41"
C 6927			600mm / 24"	985 mm / 38"	960 mm / 37"
C 6827			600mm / 24"	825 mm / 32"	800 mm / 31"
C 6627			600mm / 24"	625 mm / 24"	600 mm / 23"
C 6022	22U	1165mm / 46"	600mm / 24"	1085 mm / 42"	1060 mm / 41"
C 6922			600mm / 24"	985 mm / 38"	960 mm / 37"
C 6822			600mm / 24"	825 mm / 32"	800 mm / 31"
C 6622			600mm / 24"	625 mm / 24"	600 mm / 23"
C 6017	17U	945mm / 37"	600mm / 24"	1085 mm / 42"	1060 mm / 41"
C 6917			600mm / 24"	985 mm / 38"	960 mm / 37"
C 6817			600mm / 24"	825 mm / 32"	800 mm / 31"
C 6617			600mm / 24"	625 mm / 24"	600 mm / 23"



Single Hexagon Perforated Door

C SERIES® 19" Networking Platform Enclosure

Feature:

- Flexible and many features as you need for your application
- Basic version, with single perforated door at front and rear
- Perforated door to prove excellent thermal management 70% perforation
- 1200kg Static load
- Fan unit options - 2 - 6 cooling fan
- 6 standard height options: 45U, 42U, 37U, 27U, 22U and 17U
- 5 depth options: 1185mm, 1085mm, 985mm, 825mm and 625mm
- Components in acc. With IEC 60297
- Design door at the front with coloured offset perforation
- Cable entry on the top cover and bottom, can be completely removal and replacement after cabling



Middle Split Hexagon Perforated Door

Basic Package Configurations

- Basic frame, top & base w/ cable entry (1200kg Loading)
- Front single hexagon perforated door w/ ALO swing handle lock
- Rear single hexagon perforated door w/ ALO swing handle lock
- Lockable quick release side panel w/ clip lock x 2
- Full height adjustable 19" panel mounting angle w/ U marking x 4
- Full height adjustable Aux. side mount panel x 2
- Full depth horizontal mounting support x 6
- Full height adjustable vertical cable tray x 2 (75mm wide)
- Top mount fan tray w / 2 x AC 220V cooling fan
- Heavy duty castor & leveling feet x 4
- Earthing kit set
- M6 cage nuts, cup washers & fixings x 50

Ordering Information

Order Code	Effective Height (U)	Overall Height	Overall Width	Overall Depth	Effective Depth
C4S-6042	42U	2055mm / 81"	600mm / 24"	1085 mm / 42"	1060 mm / 41"
C4S-6942			600mm / 24"	985 mm / 38"	960 mm / 37"
C4S-6842			600mm / 24"	825 mm / 32"	800 mm / 31"
C4S-6642			600mm / 24"	625 mm / 24"	600 mm / 23"
C4S-6037	37U	1835mm / 72"	600mm / 24"	1085 mm / 42"	1060 mm / 41"
C4S-6937			600mm / 24"	985 mm / 38"	960 mm / 37"
C4S-6837			600mm / 24"	825 mm / 32"	800 mm / 31"
C4S-6637			600mm / 24"	625 mm / 24"	600 mm / 23"
C4S-6027	27U	1390mm / 55"	600mm / 24"	1085 mm / 42"	1060 mm / 41"
C4S-6927			600mm / 24"	985 mm / 38"	960 mm / 37"
C4S-6827			600mm / 24"	825 mm / 32"	800 mm / 31"
C4S-6627			600mm / 24"	625 mm / 24"	600 mm / 23"
C4S-6022	22U	1165mm / 46"	600mm / 24"	1085 mm / 42"	1060 mm / 41"
C4S-6922			600mm / 24"	985 mm / 38"	960 mm / 37"
C4S-6822			600mm / 24"	825 mm / 32"	800 mm / 31"
C4S-6622			600mm / 24"	625 mm / 24"	600 mm / 23"
C4S-6017	17U	945mm / 37"	600mm / 24"	1085 mm / 42"	1060 mm / 41"
C4S-6917			600mm / 24"	985 mm / 38"	960 mm / 37"
C4S-6817			600mm / 24"	825 mm / 32"	800 mm / 31"
C4S-6617			600mm / 24"	625 mm / 24"	600 mm / 23"