

19" rack platform for networking



E SERIES[®]

Networking Platform Enclosure



NEW
80% Perforation



1

E SERIES® MAX LOAD - 1000 KG

Features

1 Flexible ventilation components
The cover provided two H55mm x W355mm cable access and cover, Guaranteed orderly and space-saving cable management. Adjustable at installation site, cable management can be selected from extensive range of accessory components.

4 E SERIES New networking rack (Single perforated door)
Includes 1 Open frame, 2 perforated steel door, 2 side panel, 2 pair 19" panel mount angle, 3 pair horizontal mount support, 4 castor, 4 leveling feet and fan tray .

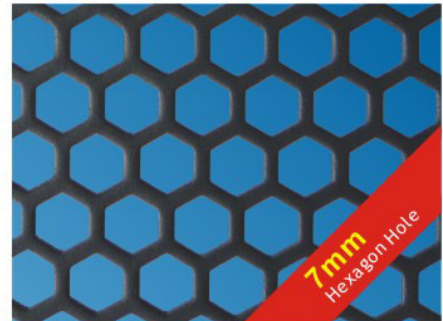


2

2 E SERIES New networking rack (Open Frame)
E SERIES has been designed for quick and easy modification to suit specific applications or corporate identity requirements, the classic E Series for static loads of 1000kg. Flexible and many features as you need for your application .

5 E SERIES New networking rack (Middle split perforated door)
Includes 1 Open frame, 2 middle split perforated steel door , 2 side panel, 2 pair 19" panel mount angle, 3 pair horizontal mount support, 4 castor, 4 leveling feet and fan tray .

3 E SERIES New networking rack (Standard Rack)
Includes 1 Open frame, 1 glass door, 1 vented steel door, 2 side panel, 2 pair 19" panel mount angle, 3 pair horizontal mount support, 4 castor, 4 leveling feet and fan tray .



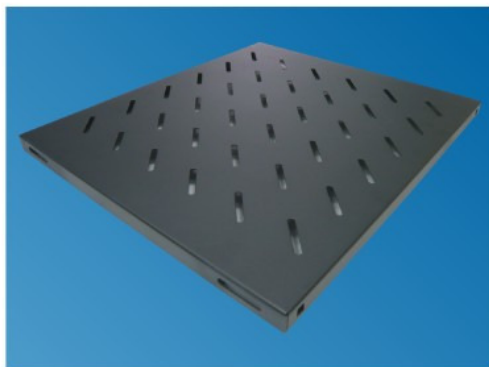
3



4



5



FIXED SHELF - E SERIES

Shelf assembly to 19" panel mounting angles allow mixed installation with 19" distribution panels.
Material: 1.5mm Steel

Order Code	Mounting	Depth	Used on	Loading (kg)
E 37	19"	370 mm	610 mm deep rack	50
E 45	19"	450 mm	810 mm deep rack	50
E 60	19"	600 mm	810 mm or above deep rack	50
E 70	19"	700 mm	970 mm or above deep rack	50
ED 60	19"	600 mm	810 mm or above deep rack	100
ED 70	19"	700 mm	970 mm or above deep rack	100



SLIDING SHELF - E SERIES

Shelf assembly to 19" panel mounting angles allow mixed installation with 19" distribution panels.
Material: 1.5mm Steel

Order Code	Mounting	Depth	Used on	Loading (kg)
ES 37	19"	370 mm	610 mm deep rack	35
ES 45	19"	450 mm	810 mm deep rack	35
ES 60	19"	600 mm	810 mm or above deep rack	35
ESD 60	19"	600 mm	810 mm or above deep rack	100

Power Distribution Unit (U.K)

Applications

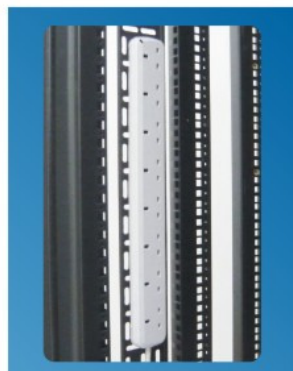
- Data Center
- Computer workstations
- Lan racking
- Security systems
- UPS power distribution
- Industrial enviroment

Specification

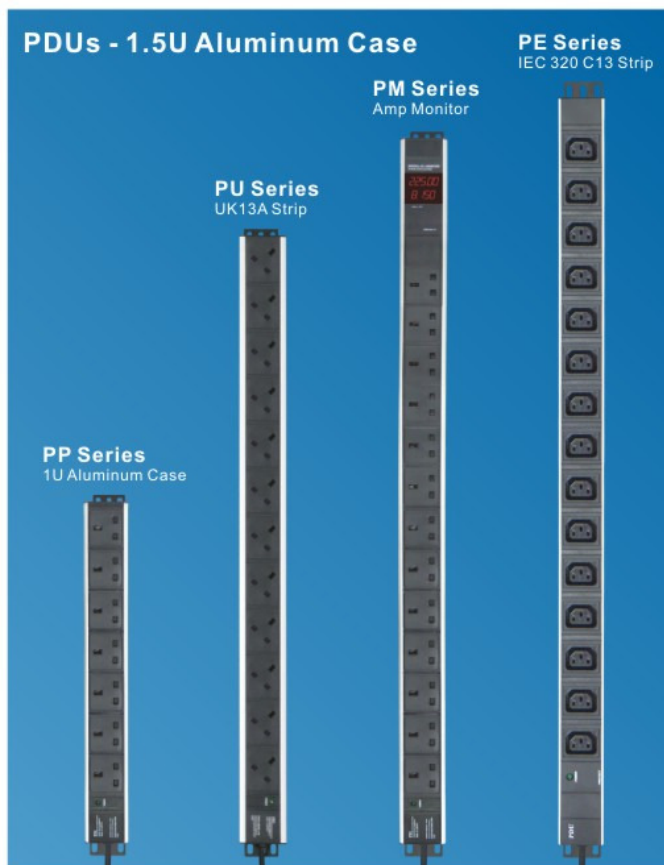
Main Plug: BS1363, IEC320 or IEC60309
 Operating Voltage: 250V AC 50/60Hz
 Rate load current: 13A, 16A, 20A, 27A or 32A
 Max. Power Pmax: 3250W - 8000W
 Operating temperature range: -20° ~ + 70°
 Power indicator : Red or Green LED



L6 - Plastic Case
Vertical Mounting



L8 - Plastic Case
Vertical Mounting



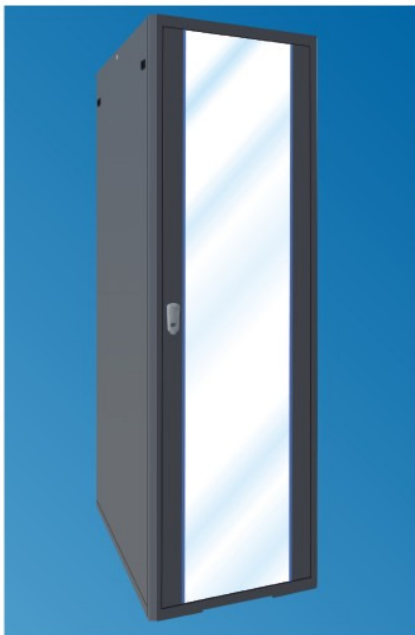
PDU's - 1.5U Aluminum Case

PE Series
IEC 320 C13 Strip

PM Series
Amp Monitor

PU Series
UK13A Strip

PP Series
1U Aluminum Case

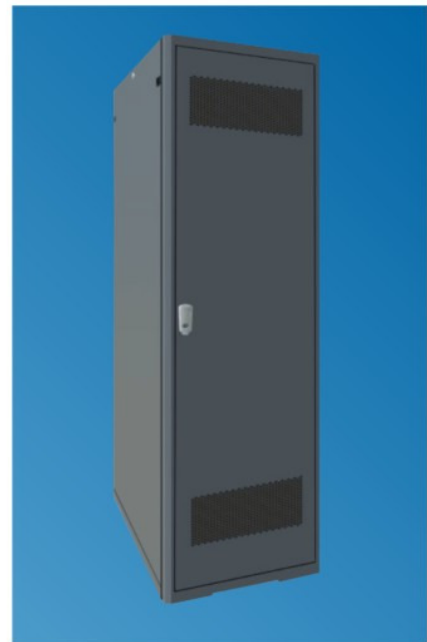


Standard Rack - Front Glass Door

E SERIES® 19" Networking Platform Enclosure

Feature:

- New Design for many features as you need for you applicaton
- Basic version, with front glass and vented rear steel door
- 1000kgs Static load
- Fan unit options - 2 - 6 cooling fan
- 5 standard height options: 42U, 37U, 27U, 22U and 17U
- 5 depth options: 1170mm, 1070mm, 970mm, 810mm and 610mm
- Components in acc. with IEC 60297
- Design door at the front with coloured offset perforation
- Cable entry on the top cover and bottom, can be completely removal and replacement after cabling



Standard Rack - Rear Vented Steel Door

Basic Package Configurations

- Basic frame, top & base w/ cable entry (1000kgs Loading)
- Front 5mm toughened safety glass door w/ swing handle lock
- Rear vented steel door w/ swing handle lock
- Lockable quick release side panel w/ clip lock x 2
- Full height adjustable 19" panel mounting angle w/ U marking x 4
- Full height adjustable Aux. side mount panel x 2
- Full depth horizontal mounting support x 6
- Full height adjustable vertical cable tray x 2 (75mm wide)
- Top mount fan tray w / 2 x AC 220V cooling fan
- Heavy duty castor & leveling feet x 4
- M6 cage nuts, cup washers & fixings x 50
- Earth Grounding ket set

Ordering Information

Order Code	Effective Height (U)	Overall Height	Overall Width	Overall Depth	Effective Depth
E6042	42U	2040mm / 81"	600mm / 24"	1070 mm / 42"	1060 mm / 41"
E6942			600mm / 24"	970 mm / 38"	960 mm / 37"
E6842			600mm / 24"	810 mm / 32"	800 mm / 31"
E6642			600mm / 24"	610 mm / 24"	600 mm / 23"
E6037	37U	1815mm / 72"	600mm / 24"	1070 mm / 42"	1060 mm / 41"
E6937			600mm / 24"	970 mm / 38"	960 mm / 37"
E6837			600mm / 24"	810 mm / 32"	800 mm / 31"
E6637			600mm / 24"	610 mm / 24"	600 mm / 23"
E6027	27U	1375mm / 55"	600mm / 24"	1070 mm / 42"	1060 mm / 41"
E6927			600mm / 24"	970 mm / 38"	960 mm / 37"
E6827			600mm / 24"	810 mm / 32"	800 mm / 31"
E6627			600mm / 24"	610 mm / 24"	600 mm / 23"
E6022	22U	1155mm / 46"	600mm / 24"	1070 mm / 42"	1060 mm / 41"
E6922			600mm / 24"	970 mm / 38"	960 mm / 37"
E6822			600mm / 24"	810 mm / 32"	800 mm / 31"
E6622			600mm / 24"	610 mm / 24"	600 mm / 23"
E6017	17U	935mm / 37"	600mm / 24"	1070 mm / 42"	1060 mm / 41"
E6917			600mm / 24"	970 mm / 38"	960 mm / 37"
E6817			600mm / 24"	810 mm / 32"	800 mm / 31"
E6617			600mm / 24"	610 mm / 24"	600 mm / 23"



Single Hexagon Perforated Door

E SERIES® 19" Networking Platform Enclosure

Feature:

- New Design for many features as you need for you applicaton
- Basic version, with front glass and vented rear steel door
- Perforated door to prove excellent thermal management 80% perforation
- 1000kgs Static load
- Fan unit options - 2 - 6 cooling fan
- 5 standard height options: 42U, 37U, 27U, 22U and 17U
- 5 depth options: 1170mm, 1070mm, 970mm, 810mm and 610mm
- Components in acc. with IEC 60297
- Design door at the front with coloured offset perforation
- Cable entry on the top cover and bottom, can be completely removal and replacement after cabling



Middle Split Hexagon Perforated Door

Basic Package Configurations

- Basic frame, top & base w/ cable entry (1000kgs Loading)
- Front single hexagon perforated steel door w/ swing handle lock
- Rear single hexagon perforated steel door w/ swing handle lock
- Lockable quick release side panel w/ clip lock x 2
- Full height adjustable 19" panel mounting angle w/ U marking x 4
- Full height adjustable Aux. side mount panel x 2
- Full depth horizontal mounting support x 6
- Full height adjustable vertical cable tray x 2 (75mm wide)
- Top mount fan tray w / 2 x AC 220V cooling fan
- Heavy duty castor & leveling feet x 4
- M6 cage nuts, cup washers & fixings x 50
- Earth Grounding ket set

Ordering Information

Order Code	Effective Height (U)	Overall Height	Overall Width	Overall Depth	Effective Depth
E3S-6042	42U	2040mm / 81"	600mm / 24"	1070 mm / 42"	1060 mm / 41"
E3S-6942			600mm / 24"	970 mm / 38"	960 mm / 37"
E3S-6842			600mm / 24"	810 mm / 32"	800 mm / 31"
E3S-6642			600mm / 24"	610 mm / 24"	600 mm / 23"
E3S-6037	37U	1815mm / 72"	600mm / 24"	1070 mm / 42"	1060 mm / 41"
E3S-6937			600mm / 24"	970 mm / 38"	960 mm / 37"
E3S-6837			600mm / 24"	810 mm / 32"	800 mm / 31"
E3S-6637			600mm / 24"	610 mm / 24"	600 mm / 23"
E3S-6027	27U	1375mm / 55"	600mm / 24"	1070 mm / 42"	1060 mm / 41"
E3S-6927			600mm / 24"	970 mm / 38"	960 mm / 37"
E3S-6827			600mm / 24"	810 mm / 32"	800 mm / 31"
E3S-6627			600mm / 24"	610 mm / 24"	600 mm / 23"
E3S-6022	22U	1155mm / 46"	600mm / 24"	1070 mm / 42"	1060 mm / 41"
E3S-6922			600mm / 24"	970 mm / 38"	960 mm / 37"
E3S-6822			600mm / 24"	810 mm / 32"	800 mm / 31"
E3S-6622			600mm / 24"	610 mm / 24"	600 mm / 23"
E3S-6017	17U	935mm / 37"	600mm / 24"	1070 mm / 42"	1060 mm / 41"
E3S-6917			600mm / 24"	970 mm / 38"	960 mm / 37"
E3S-6817			600mm / 24"	810 mm / 32"	800 mm / 31"
E3S-6617			600mm / 24"	610 mm / 24"	600 mm / 23"